

BETA This is a new service. Our feedback survey is currently closed. We plan to re-open it soon.

The Government has announced that it will not publish any school or college level educational performance data based on tests, assessments or exams for 2020, and has outlined accountability arrangements for 2020/21. Further information on what this means for the way school and college accountability will operate for 2019/20 and for 2020/21 can be found here.

[Back to search results](#)

St Michael's Church of England Voluntary Aided Primary School, Lyme Regis

This school is located in a local authority (LA) that was subject to re-organisation on 1 April 2019. Due to this change, there is no 2017/2018 LA average data available. Averages for the new LAs will be published with the 2018/2019 school performance data with the exception of pupil destinations data, which will be published with the 2018/2019 leavers destinations data.

Address: Kings Way, Lyme Regis, DT7 3DY

School type: Voluntary aided school ?

Education phase: Primary

Gender of entry: Mixed

Ofsted rating: **3** Requires Improvement | ?
Inspected 16 May 2018

Local authority: [Dorset](#)

Headteacher / Principal: Mr Nick Kiddle

Age range: 4 to 11

Religious character: Church of England

Admissions policy: Not applicable ?

Unique reference: 113851

Website: [School website](#)

Apply for a place: [Primary](#)Financial information: [Schools financial benchmarking](#) ?Further information: [Get information about schools](#) ?Compare similar schools: **Primary**

This is final data for 2018/2019

▼ [About these results](#)

This page shows [final](#) results data for pupils who completed [key stage 2](#) in the summer of 2019. These figures were published in March 2020.

Progress score in reading, writing and maths ?

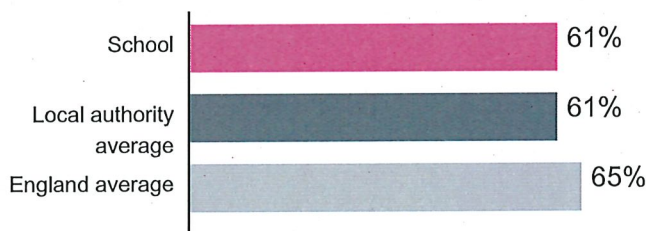
Reading

Writing

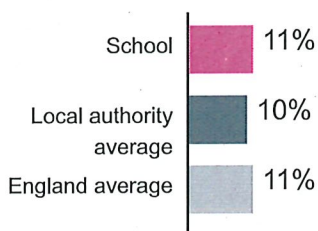
Maths

Average -0.6**Average** -1.8**Average** -0.2

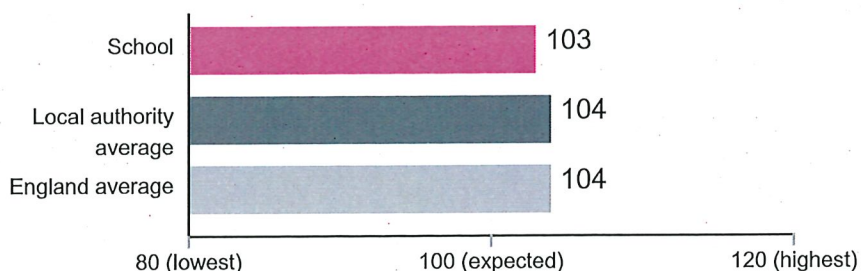
Pupils meeting expected standard in reading, writing and maths ?



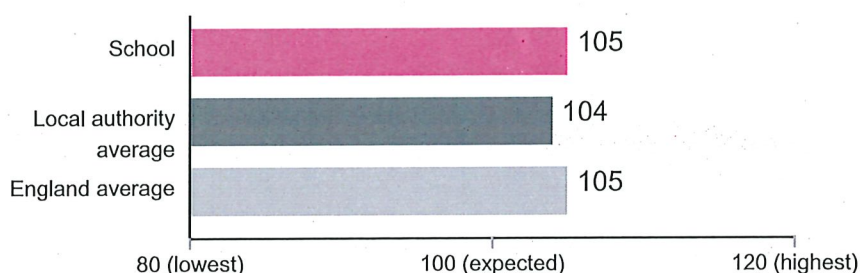
Pupils achieving at a higher standard in reading, writing and maths ?



Average score in reading ?



Average score in maths ?



Results over time

Results by pupil characteristics

About this data

▼ Abbreviations

- LOWCOV = Low coverage: shown for the 'value added' measure and coverage indicator where schools have less than 50% of pupils included in calculation of the measure
- NA = Not applicable: figures are either not available for the year in question, or the data field is not applicable to the school or college
- NE = No entries: the school or college did not enter any pupils or students for the qualifications covered by the measure
- NEW = New school or college
- NP = Not published: for example, we do not publish Progress 8 data for independent schools and independent special schools, or breakdowns by disadvantaged and other pupils for independent schools, independent special schools and non-maintained special schools
- SP = Small percentage: the number is between 0% and 0.5%
- SUPP = Suppressed: in certain circumstances we will suppress an establishment's data. This is usually when there are 5 or fewer pupils or students covered by the measure (29 for apprenticeships measures). We avoid making these figures public to protect individual privacy. We may also suppress data on a case-by-case basis.

▼ Further guidance

Read the [guidance about using the school performance tables](#).

Read more information about the [key stages and the national curriculum](#).

